







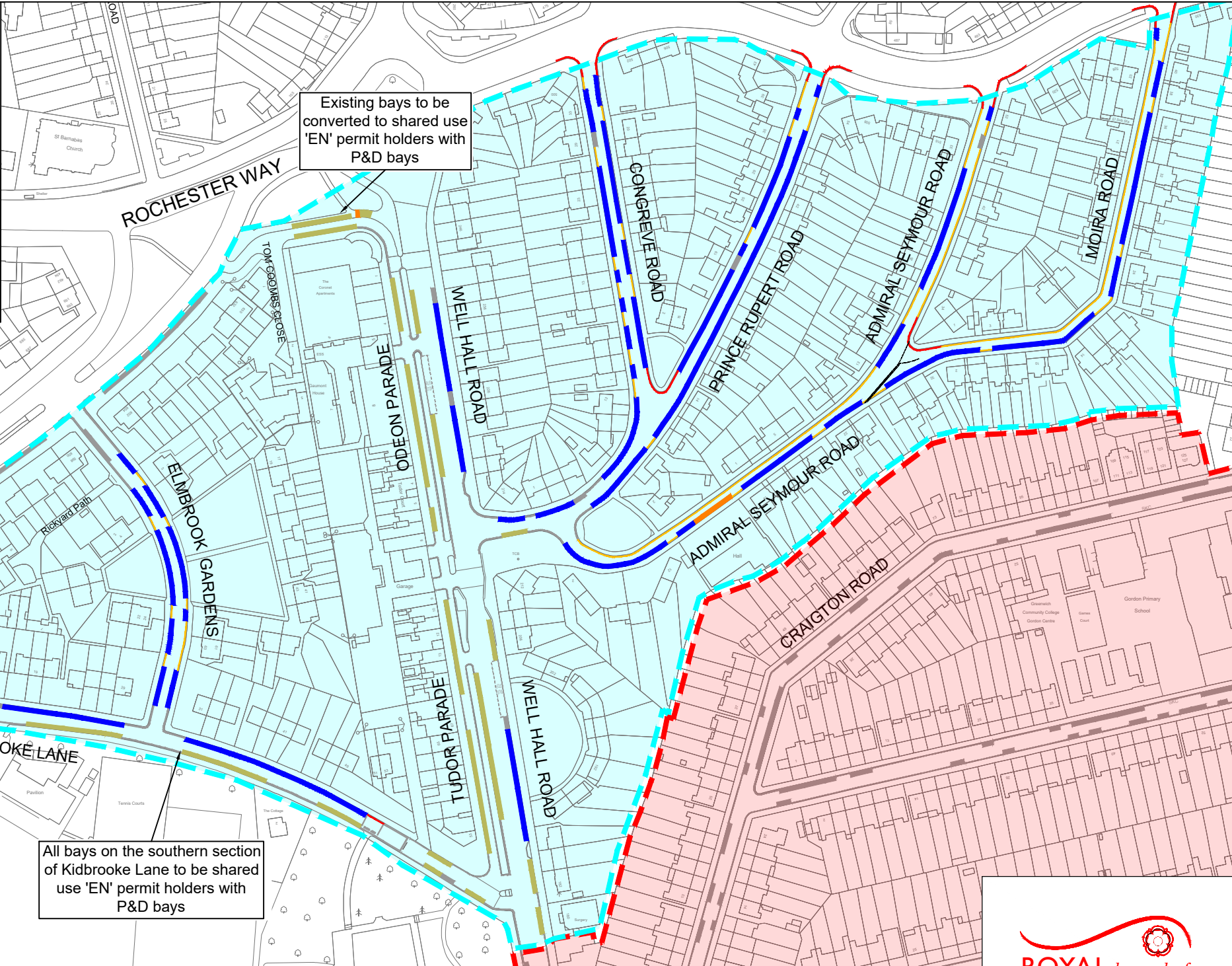


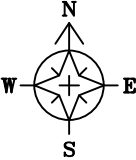
Legend

-  All restrictions in grey are existing and to remain unchanged
-  'EN' Permit holders only parking bay
-  'EN' Permit holders / Pay & Display 4 hours max stay parking bay (30 minutes free)
-  Blue Badge Holders Bay
-  Proposed single yellow line - Mon - Sat, 9am - 5.30pm
-  Proposed double yellow line
-  Existing Controlled Parking Zone E
-  Proposed Controlled Parking Zone EN (Mon - Sat, 9am - 5.30pm)



Existing bays to be converted to shared use 'EN' permit holders with P&D bays

All bays on the southern section of Kidbrooke Lane to be shared use 'EN' permit holders with P&D bays



Plan I

