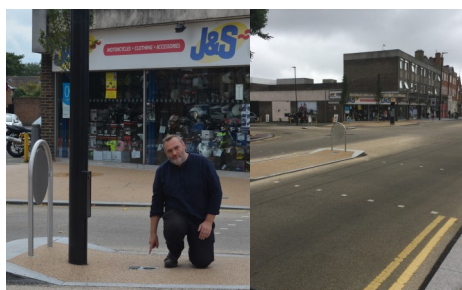


LABOUR MAYOR DELAYS HIGH STREET WORKS

Labour admits missing traffic lights due to Sadiq Khan's delays



Eltham North Councillor Spencer Drury at the junction where traffic light were still absent at the end of August.

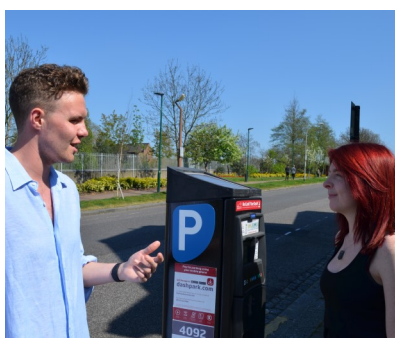
At the July meeting of Royal Borough of Greenwich Council Labour's Cabinet Member for Transport admitted that the failure to install a new pedestrian crossing at the junction of Eltham High Street & Footscray Road is the result of delays by the Mayor of London's (Sadiq Khan) Transport for London organisation.

In response to a question from Eltham Councillor Spencer Drury, Cllr Sizwe James replied that "Traffic signals in London are installed by Transport for London(TfL). The Council's contractor completed the preparatory work for the signals sometime ago and Officers have been pressing TfL to install signals for some time." Cllr James stated that the traffic lights should be installed by the end of 2017, but agreed to keep up the pressure on TfL at Cllr Drury's request.

Spencer said "In my opinion, this junction at the top of Eltham High Street is quite dangerous – it is laid out and marked up for traffic lights, but they simply aren't there. This situation makes clear the difference in how Labour' Mayor of London treats Eltham compared to Boris Johnson who allocated £5m for improvements."

CONTROLLED PARKING ZONES RETURN TO ELTHAM

Following questions from Conservatives Councillors, over the summer Greenwich Council finally published the results of the January consultation on the expansion of Controlled Parking Zones (CPZs) across much of Eltham Park and the Progress Estate. A further statutory consultation will follow but initial results suggest that Eltham Park Gardens and the Progress Estate south of the Rochester Way will be added to the CPZs. Southern Glesk Rod voted to leave the CPZ. Conservatives will continue to work to ensure that this is not a political issue and the wishes of residents are given priority over any revenue raising plans from the Council.



Cllr Charlie Davis discusses the reintroduction of some free parking western Glenlea Road where there are no residents and shops/ residents could benefit.

DEVELOPMENTS IN ELTHAM



Cllr Charlie Davis outside the proposed site of the new block besides M&S car park.

Cllr Charlie Davis worked with residents concerning the proposed development on Orangery Lane to try and help the developer adjust their plans. A meeting was organised between the developer and residents and Cllr Spencer Drury attended the site visit by the members of the Planning Board. Concerns over the height, parking arrangements and the lack of affordable homes contributed towards the decision to reject the application. The decision illustrates the benefit to Eltham residents of having opposition Councillor to ensure their voice is heard by the Council. Eltham Conservatives have also been working on late night Licensing applications from Vue cinemas and Sainsburys.

RESTORATION OF WAR MEMORIAL

We are pleased to announce that following a bid to the Council's ward budget scheme, Eltham North Councillors have secured £9,000 to improve the clarity of names on the war memorial. The work is highly specialised and being organised by the Royal Greenwich Heritage Trust which is responsible for war memorials and buildings across the Borough. The Trust has recently set up a Friends scheme which is £15 to join.



ELTHAM POLICE STATION SHOULD STAY OPEN

An Eltham Councillor has revealed that figures released by the Mayor of London to justify the closure of Eltham Police Station actually prove it is busier than other nearby police stations.

In Cllr Spencer Drury's written response to the Mayor of London's plan to close and sell off Eltham's Police Station, he points out that the figures contained in the plan actually suggest that Eltham's Police Station is busier per hour than Plumstead or Bromley. The figures suggest that Eltham Police Station dealt with 0.175 crimes per hour over its counter in May compared with 0.133 at Plumstead and 0.108 in Bromley.

Neither Bromley nor Plumstead are scheduled for closure.

Spencer said "Sadiq Khan's slapdash consultation does not seem to take into account the number of hours a police station is actually open, so the fact that Eltham is only part-time has been ignored in the rush to sell it off. I completely oppose the plans to close and sell-off Eltham Police Station and hope the plans will be reversed."

Eltham North Cllr Charlie Davis has started a petition to save our Police Station at: www.change.org/p/save-eltham-police-station.



Councillors Spencer Drury and Charlie Davis outside Eltham Police Station

WARD ROUND-UP

Reading Sheds for the Gordon

Over the summer, Eltham North Councillors worked with the Gordon School's Head Jason Taylor to submit a successful bid to the Council for reading sheds to be built in the playground aimed at improving literacy among the younger children.

Supporting Westmount shops

Eltham North Councillors worked with traders to help support the successful summer open day where shops moved out on to the pavement. A great success which will hopefully be repeated.

Improving Lovelace Green

This summer Eltham North's Conservative Councillors were pleased to be able to work with the Council to reinstate the path across Lovelace Green at the centre of the Progress Estate. Working with residents revealed serious concerns about anti-social behaviour so Charlie and Spencer completed a survey which was then passed on to local police, Hyde Housing and the Council's anti-social behaviour team. We hope it improved the situation over the summer.



YOUR LOCAL CONSERVATIVE TEAM



COUNCILLOR CHARLIE DAVIS

07712 436150 @CDavisEltham
charlie-davis@hotmail.co.uk



COUNCILLOR SPENCER DRURY

0750 785 9184 @Spencer_Drury
spencer@spencerdrury.com
<http://spencerdrury.yourcllr.com/>



JAMES SHIPP

020 8850 2880
campaignmanager.eltham@gmail.com

Declining levels of affordable homes

In the spring Eltham Conservatives revealed that the Labour Council were spending £20m on a 'Buy not Build' policy purchasing private properties on the open market with Right to Buy receipts. Further research has shown that the Council is allowing a declining level of affordable homes in new developments in the Borough, with the proportion dropping from 33% in 2011 to 18% in 2016. These policies make it harder for people born locally to afford a home in Eltham and need to be changed.